



GEARHEADS Frame size 70mm sq. (2.76 in. sq.)

METAL TYPE & BALL BEARING TYPE

▶ **RATED TORQUE OF GEARHEAD**

MODEL	Speed(rpm)	500	300	200	120	100	60	50	30	20	15	10	9	
	Ratio	50Hz	3	5	7.5	12.5	15	25	30	50	75	100	150	166.7
		60Hz	3.6	6	9	15	18	30	36	60	90	120	180	200
L7HK□M L7HK□B	kg-cm	3.0	4.9	7.4	12.4	14.8	22.3	26.7	40.3	50	50	50	50	
	N-m	0.29	0.48	0.73	1.21	1.45	2.18	2.62	3.95	4.90	4.90	4.90	4.90	
	oz-in	41	69	103	172	206	309	371	559	694	694	694	694	

- * The normal torque is that the motor and gearhead are directly coupled.
- * Insert the denominator of reduction ratio in □ of gearhead model name.
- * Actual rotation speed is 2~15% less than synchronous speed.
- * ■Color indicates that the rotation of gearhead shaft is in opposite direction as output shaft of motor.

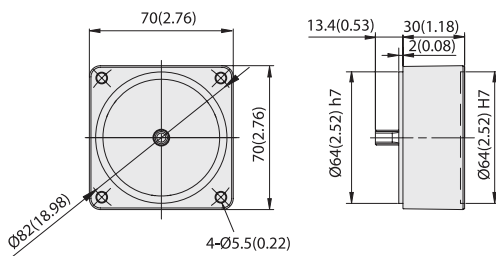
REVERSIBLE MOTORS

DIMENSIONS

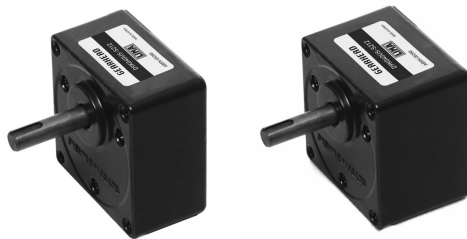
Unit : mm(inch)

DECIMAL GEARHEAD

L7G10D

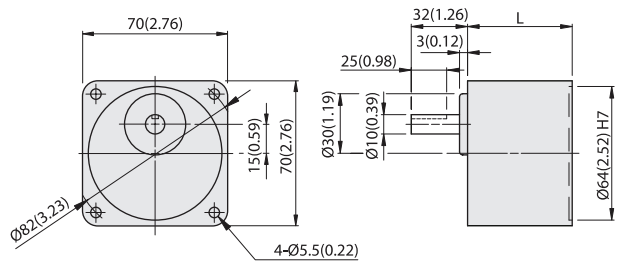


WEIGHT 0.3kg(0.66 lb)

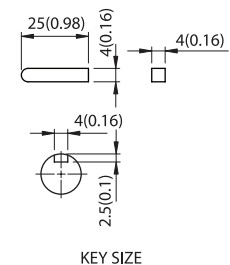


GEARHEAD

L7HK□M(B)



GEAR RATIO	L		WEIGHT		BOLT
	mm	in	kg	lb	
1/3~1/18	32	1.26	0.45	1	M5x50
1/20~1/200	42	1.65	0.55	1.2	M5x65



KEY SIZE

L7HK□M(B) + L7R15P□L

